



GAT MONTHLY MEMBERSHIP PROGRESS REPORT

Results as of: 5/31/2023

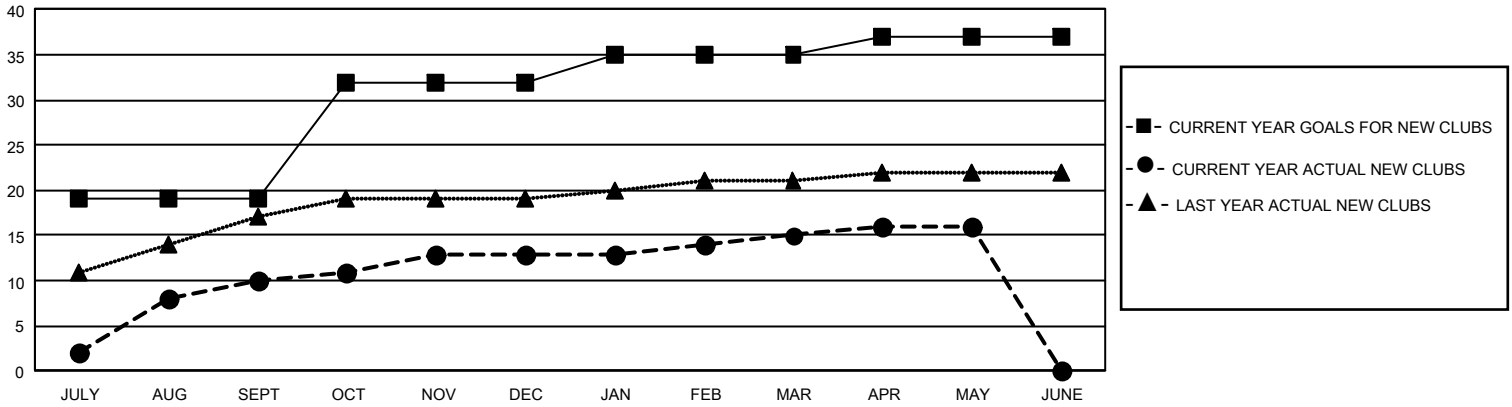
GMT Constitutional Area 5 - M, Group F

REPORT DOES NOT INCLUDE CLUBS IN UNDISTRICTED AREAS.

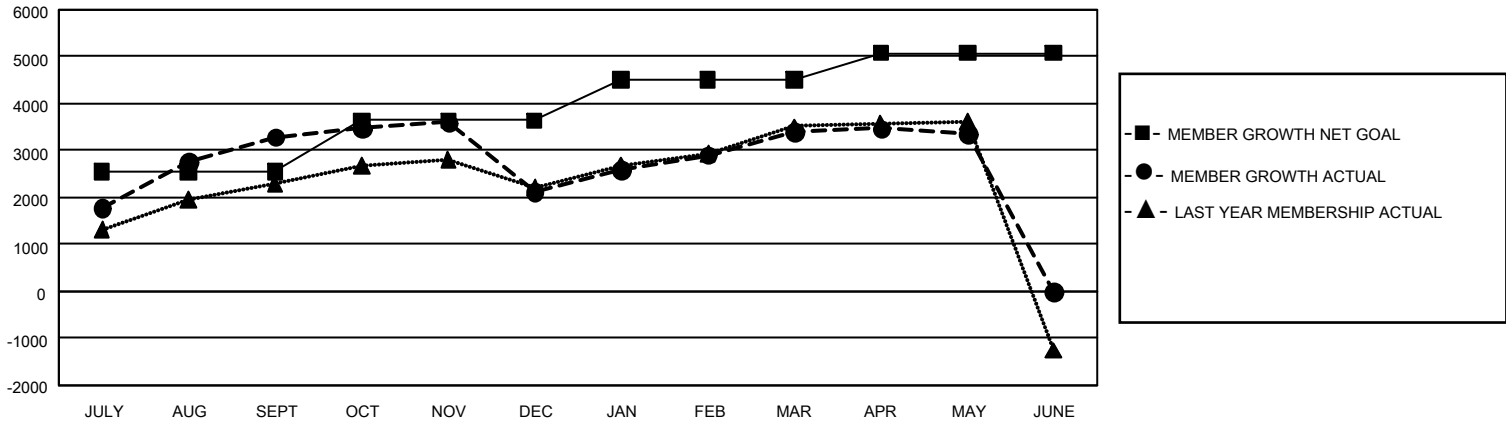
Clubs			
RESULTS FOR 2022-2023			
QUARTER	NEW CLUB GOAL	NEW CLUBS	DROPPED CLUBS
JULY/AUG/SEPT	57	10	8
OCT/NOV/DEC	39	3	4
JAN/FEB/MAR	9	2	4
APR/MAY/JUNE	6	1	0

Members			
RESULTS FOR 2022-2023			
QUARTER	MEMBER GROWTH NET GOAL	MEMBER GROWTH ACTUAL	DROPPED MEMBERS ACTUAL (including transfers)
JULY/AUG/SEPT	2540	4,533	896
OCT/NOV/DEC	1100	826	1,853
JAN/FEB/MAR	864	1,654	213
APR/MAY/JUNE	573	233	218

GOALS AND ACTUAL NEW CLUBS CUMULATIVE



GOALS AND ACTUAL MEMBERS CUMULATIVE



DROPPED CLUBS: 16	978 CLUBS OF 1,117 ADDED 1 OR MORE NEW MEMBERS	GENDER DISTRIBUTION	
		MALE 27,826 (65.93%) FEMALE 14,364 (34.03%) NON BINARY 0 (0.00%) PREFER NOT TO ANSWER 14 (0.03%)	
DROPPED MEMBERS		CLICK HERE FOR CUMULATIVE MEMBERSHIP DATA	TOTAL FAMILY UNIT MEMBERS 7,342
DECEASED 99 CLUB CANCELLED 18 OTHER 3,063 TOTAL 3,180	FAMILY MEMBERS PAYING HALF DUES 4,463		